



Nissan Intelligent Mobility moves you one step ahead. In cars that feel like an extension of you, helping you see more and sense more, reacting with you, and sometimes even for you. Nissan Intelligent Mobility is about a better future – moving through life with greater confidence, excitement and connection to the world around you.



ARMADA®

2022

<sup>1</sup>Availability of features vary by vehicle model year, model, trim level, packaging, and options. Please see Owner's Manual for important feature information. <sup>2</sup>Leather appointments. <sup>3</sup>Available feature. <sup>4</sup>Use feature only when safe and legal. Compatible device and service required. Subject to third party service availability. For more information see [NissanUSA.com/connect/legal](https://www.nissanusa.com/connect/legal). <sup>5</sup>Driving is serious business and requires your full attention. If you have to use the connected device while driving, exercise extreme caution at all times so full attention may be given to vehicle operation. <sup>6</sup>Use Hands Free Text Messaging when parked in a safe location. If you must use while driving, monitor traffic conditions and keep both hands on the steering wheel to prevent collisions. Compatible device required. Message and data rates may apply. <sup>7</sup>Do not ride in a moving vehicle when the seatback is reclined. For the most effective protection, the seat should be upright. See Owner's Manual for safety information. <sup>8</sup>Tri-Zone operation requires compatible auxiliary media system. See Owner's Manual for details. <sup>9</sup>Horsepower and torque figures based on premium fuel only. <sup>10</sup>Towing capability varies by configuration. See Nissan Towing Guide and Owner's Manual for additional information. Always secure cargo. <sup>11</sup>Intelligent 4x4 cannot prevent collisions or provide enhanced traction in all conditions. Always monitor traffic and weather conditions. <sup>12</sup>Nissan Safety Shield technologies can't prevent all collisions or warn in all situations. See Owner's Manual for important safety information. <sup>13</sup>Automatic Emergency Braking with Pedestrian Detection cannot prevent all collisions and may not provide warning or braking in all conditions. Driver should monitor traffic conditions and brake as needed to prevent collisions. See Owner's Manual for safety information. <sup>14</sup>Rear Automatic Braking cannot prevent all collisions and may not provide warning or braking in all conditions. Driver should always turn and check surroundings before driving and brake as needed to prevent collisions. See Owner's Manual for safety information. <sup>15</sup>Rear Cross Traffic Alert may not detect all vehicles. See Owner's Manual for safety information. <sup>16</sup>Blind Spot Warning and Intelligent Blind Spot Intervention cannot prevent collisions and may not detect every object or warn in all situations. Driver should always turn and look before changing lanes. See Owner's Manual for safety information. <sup>17</sup>Lane Departure Warning and Intelligent Lane Intervention only operate when lane markings are able to be detected. See Owner's Manual for safety information. <sup>18</sup>Intelligent Cruise Control uses limited braking and is not a collision avoidance or warning system. Driver should monitor traffic conditions and brake as needed to prevent collisions. See Owner's Manual for safety information. <sup>19</sup>Remote Engine Start System to be used only in accordance with any laws or rules in effect in your vehicle's location. <sup>20</sup>Extra cost option. <sup>21</sup>Brake Assist cannot prevent all collisions and may not provide warning or braking in all conditions. Driver should monitor traffic conditions and brake as needed to prevent collisions. See Owner's Manual for safety information. <sup>22</sup>Intelligent Driver Alertness cannot provide a warning in every situation. See Owner's Manual for safety information. <sup>23</sup>Intelligent Forward Collision Warning cannot prevent collisions. See Owner's Manual for safety information. <sup>24</sup>Sonar System may not detect every object. Driver should always check surroundings before driving. See Owner's Manual for safety information. <sup>25</sup>Vehicle Dynamic Control cannot prevent collisions due to abrupt steering, carelessness, or dangerous driving techniques. It should remain on when driving, except when freeing the vehicle from mud or snow. See Owner's Manual for safety information. <sup>26</sup>Rear Door Alert System does not detect people or cargo. Always check rear seat before exiting. See Owner's Manual for safety information. <sup>27</sup>Cargo and load capacity limited by weight and distribution. Always secure cargo. Heavy loading of the vehicle with cargo, especially on the roof, will affect the handling and stability of the vehicle. <sup>28</sup>Information displayed is dependent on how vehicle is equipped. Driving is serious business and requires your full attention. If you have to use the feature while driving, exercise extreme caution at all times so full attention may be given to vehicle operation. <sup>29</sup>Never program while driving. GPS mapping may not be detailed in all areas or reflect current road status. <sup>30</sup>Intelligent Around View® Monitor cannot eliminate blind spots and may not detect every object. Driver should always turn and check surroundings before driving. See Owner's Manual for safety information. <sup>31</sup>120-volt power outlet is intended only for use with compatible items. Please check specifications of wattage and amperage of items to be plugged in to determine compatibility. <sup>32</sup>Intelligent Back-Up Intervention may not detect every object. Driver should always turn and check surroundings before driving. See Owner's Manual for safety information. <sup>33</sup>Intelligent Rear View Mirror may not detect every object and does not eliminate blind spots or warn of moving objects. See Owner's Manual for safety information. <sup>34</sup>Traffic Sign Recognition may not detect and read all traffic signs in all conditions. Driver should monitor all traffic signs and obey all traffic laws. See Owner's Manual for details. <sup>35</sup>Genuine Nissan Accessories are covered by Nissan's limited warranty on Genuine Nissan Replacement Parts, Genuine NISMO® S-Tune Parts, and Genuine Nissan Accessories for the longer of 12 months/12,000 miles (whichever occurs first) or the remaining period under the 36-months/36,000-mile (whichever occurs first) new vehicle limited warranty. Terms and conditions apply. See dealer, warranty information booklet, or [parts.nissanusa.com](https://www.parts.nissanusa.com) for details. <sup>36</sup>Genuine Nissan Accessory Roof Rail Crossbars have a maximum weight limit of 100 lbs. <sup>37</sup>Not a genuine Nissan part/accessory. Not warranted by Nissan. Refer to product manufacturer for warranty details. Nissan Limited Warranty does not cover damages or failures to the vehicle caused by improper installation or alterations of any Nissan approved accessory or component. Contact your dealer/retailer for details. <sup>38</sup>Rear View Monitor may not detect every object and does not eliminate blind spots or warn of moving objects. See Owner's Manual for safety information. <sup>39</sup>Air bags are only a supplemental restraint system. Always wear your seat belt. Rear-facing child restraints should not be placed in the front-passenger's seat. All children 12 and under should ride in the rear seat properly secured in child restraints, booster seats, or seat belts according to their size. Air bags will only inflate in certain accidents. See Owner's Manual for safety information. <sup>40</sup>Tire Pressure Monitoring System is not a substitute for regular tire pressure checks. See Owner's Manual for safety information. <sup>41</sup>Vehicle must be on for the Easy-Fill Tire Alert to operate. <sup>42</sup>2021 EPA Fuel Economy Estimates. 14 City MPG / 19 Highway MPG / 16 Combined MPG for Armada 4x2. 13 City MPG / 18 Highway MPG / 15 Combined MPG for Armada 4x4. 2022 EPA estimates not available at time of publication. Actual mileage may vary with driving conditions. Use for comparison only. <sup>43</sup>Roadside Assistance available for a period of 36 months/36,000 miles from the date the vehicle is delivered to the first retail buyer or otherwise put into use, whichever is earlier. Apple CarPlay®, Siri®, Siri® Eyes Free, and Apple Music® are registered trademarks of Apple, Inc. AudioPilot™ is a trademark of The Bose Corporation. Bose® is a registered trademark of The Bose Corporation. Facebook® is a registered trademark of Facebook, Inc. Google, Android, Android Auto, YouTube, and other marks are trademarks of Google LLC. HomeLink® is a registered trademark of Gentex Corporation. iPhone® is a registered trademark of Apple, Inc. All rights reserved. iPhone® or other external device not included. The Sirius®, XM®, and SiriusXM® names and all related marks and logos are trademarks of Sirius XM Radio Inc. All other trademarks are the property of their respective owners. Twitter® is a registered trademark of Twitter, Inc. This brochure is intended for general descriptive and informational purposes only. It is subject to change and does not constitute an offer, representation or warranty (express or implied) by Nissan North America, Inc. Interested parties should confirm the accuracy of any information in this brochure as it relates to a vehicle directly with Nissan North America, Inc., before relying on it to make a purchase decision. Nissan North America, Inc., reserves the right to make changes, at any time, without prior notice, in prices, colors, materials, equipment, specifications, and models and to discontinue models or equipment. Due to continuous product development and other pre- and post-production factors, actual vehicle, materials and specifications may vary from this brochure. Some vehicles shown with optional equipment. See the actual vehicle for complete accuracy. Availability and delivery times for particular models or equipment may vary. Specifications, options and accessories may differ in Hawaii, U.S. territories and other countries. For additional information on availability, options or accessories, see your Nissan dealer or contact Nissan North America, Inc. At [NissanUSA.com](https://www.nissanusa.com), you'll find virtual product demonstrations, a way to "build your own Nissan," a dealer locator, and more information about key Nissan support services. Or if you'd prefer, call 1-800-NISSAN-3 for answers to specific questions about Armada® or any other Nissan vehicle. The Nissan names, logos, product names, feature names, and slogans are trademarks owned by or licensed to Nissan Motor Co. Ltd. and/or its North American subsidiaries. Other trademarks and trade names are those of their respective owners. **Always wear your seat belt, and please drive responsibly.** ©2021 Nissan North America, Inc. 22 Armada®. 2205823-N-06/21-70K-KSL



# Armada makes every day exciting

Premium looks and room for up to eight meets capability to expand what your next adventure could be. The chiseled exterior gives way to first-class interior luxury that will change what you come to expect from an SUV. And with 16 standard driver assistance features, you can feel confident whether cruising the interstate or navigating a rock-laden trail.<sup>1</sup>



Nissan Armada® Platinum shown in Coulis Red Pearl.



### Treat yourself to upgraded style and tech

This is where you want to be. Surrounded by quilted leather appointments,<sup>3</sup> wood-tone trim, and brushed metal accents. A large, 12.3" color touch-screen display puts what's important to you within reach.

**Wireless Apple CarPlay® integration** People to see? Places to be? Just ask Siri®. Equipped with Siri® voice control, Apple CarPlay®, shown here, brings your contacts, favorite messaging apps, Apple Music® playlists, Apple Maps, and more on board to your Armada. No need to plug in, just bring your compatible iPhone®.<sup>4, 5</sup>



**Android Auto™** With Android Auto, you can keep your eyes on the road and hands on the wheel while using your voice to help you with your day. Ask Google to play your favorite song, navigate home, or respond to a text hands-free. Just say, "Hey Google" or long-press the voice control button on your steering wheel.<sup>4, 5, 6</sup>



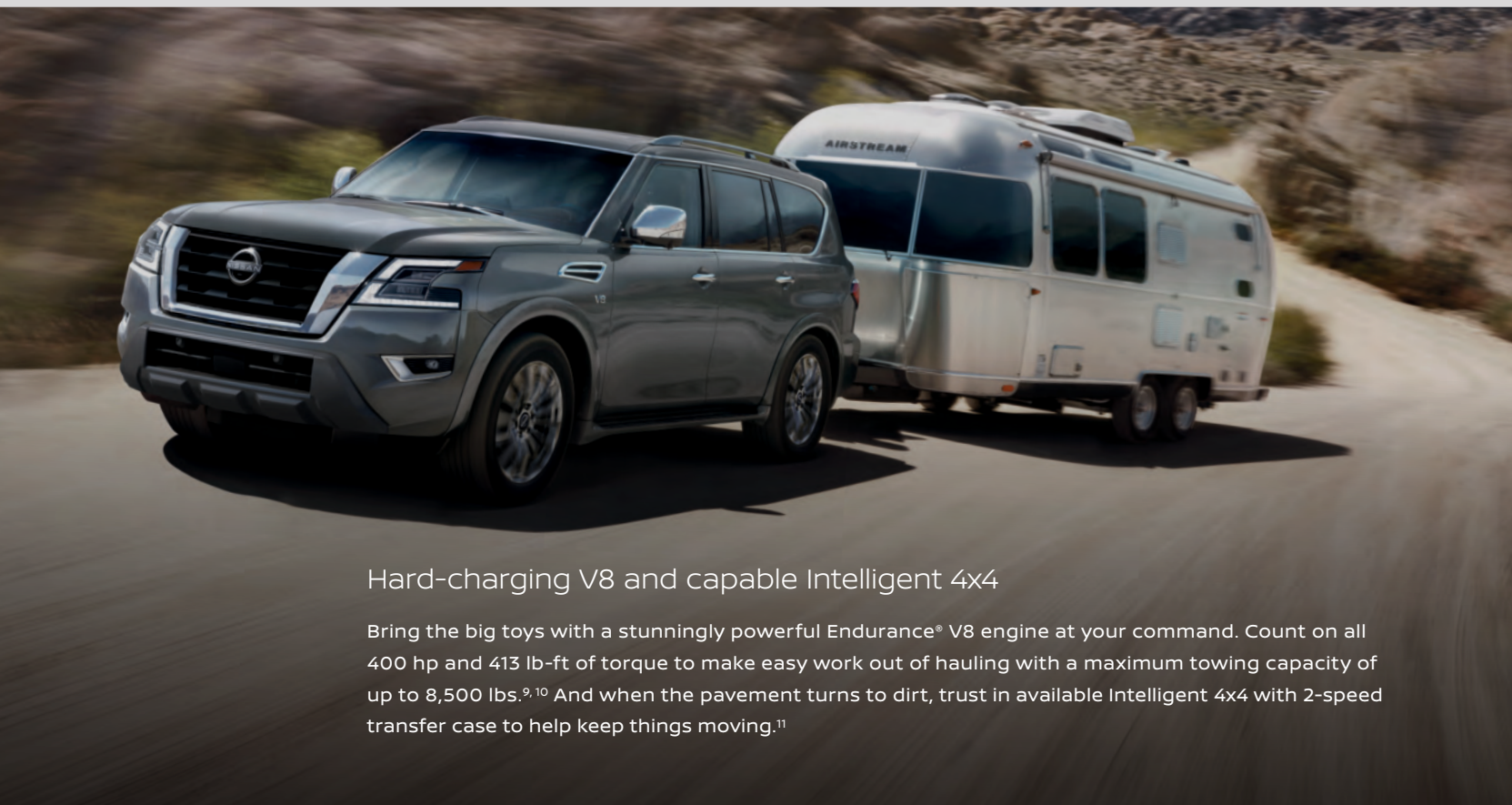
**Wireless Charger** Keep it 100%. Armada's available wireless charging lets you charge your compatible gadgets without the need for cords.<sup>3, 5</sup>



### Custom comfort for all

Let the whole crew enjoy exceptional comfort with seating for eight – or seven with the available second-row captain’s chairs. Add in an innovative climate control system that reaches every row, and every passenger can find their ideal zone.

- Heated front and 2nd-row seats<sup>3</sup>
- Seating for up to 8
- Rear air conditioning with rear controls
- Power recline and one-touch folding 3rd-row seats<sup>3,7</sup>
- Tri-Zone Entertainment system with Two Wireless Headphones<sup>3,8</sup>



### Hard-charging V8 and capable Intelligent 4x4

Bring the big toys with a stunningly powerful Endurance® V8 engine at your command. Count on all 400 hp and 413 lb-ft of torque to make easy work out of hauling with a maximum towing capacity of up to 8,500 lbs.<sup>9,10</sup> And when the pavement turns to dirt, trust in available Intelligent 4x4 with 2-speed transfer case to help keep things moving.<sup>11</sup>



### Standard Nissan Safety Shield® 360 and driver assist technologies

In one of the most advanced Nissan vehicles ever, you can expect confidence from an array of safety and driver assist features.<sup>1,12</sup>

#### Safety Shield 360 includes:

- Automatic Emergency Braking with Pedestrian Detection<sup>13</sup>
- Rear Automatic Braking<sup>14</sup>
- Rear Cross Traffic Alert<sup>15</sup>
- Blind Spot Warning<sup>16</sup>
- Lane Departure Warning<sup>17</sup>
- High Beam Assist

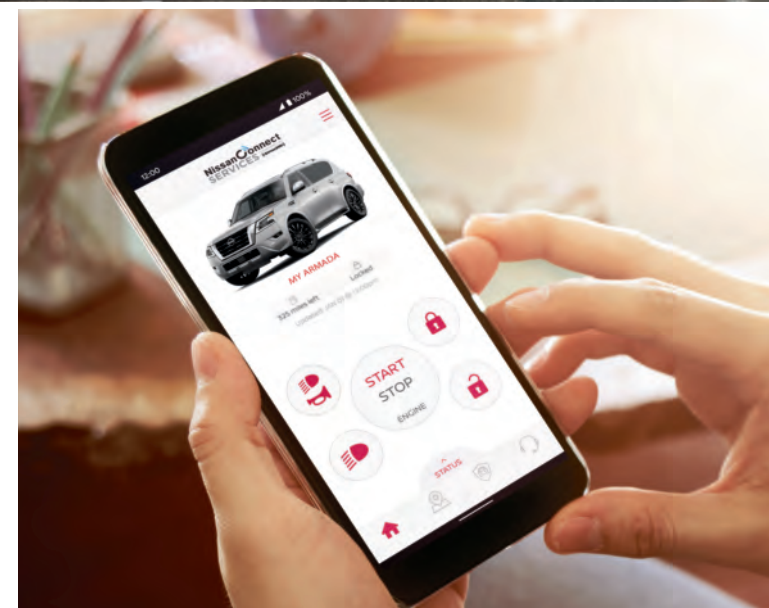
#### Armada also comes standard with:

- Intelligent Cruise Control<sup>18</sup>
- Intelligent Blind Spot Intervention<sup>16</sup>
- Intelligent Lane Intervention<sup>17</sup>

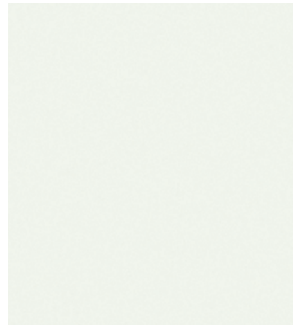


### Remote start from your phone

With NissanConnect® Services, you can remotely start your vehicle from nearly anywhere your compatible smartphone works. Need to unlock your vehicle for a friend? Just tap the unlock button on your phone. You can even find your parked vehicle’s location. Now that’s cool.<sup>4,19</sup>



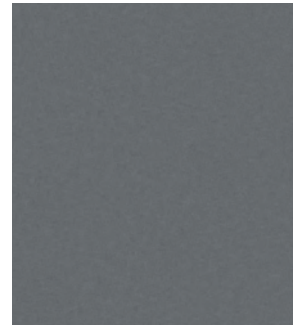
## CHOOSE YOUR COLOR



Aspen White TriCoat<sup>20</sup>



Brilliant Silver Metallic



Gun Metallic



Coulis Red Pearl

	S	SV	SL	ME	PLT
Charcoal Cloth					
Almond Leatherette		■			
Charcoal Leatherette		■			
Almond Leather <sup>2</sup>			■		
Charcoal Leather <sup>2</sup>			■		
Black Leather <sup>2</sup>				■	
Quilted Almond Leather <sup>2</sup>					■
Quilted Black Leather <sup>2</sup>					■
Quilted Espresso Brown Leather <sup>2</sup>					■

	S	SV	SL	ME	PLT
Charcoal Cloth	■				
Almond Leatherette		■			
Charcoal Leatherette		■			
Almond Leather <sup>2</sup>			■		
Charcoal Leather <sup>2</sup>			■		
Black Leather <sup>2</sup>				■	
Quilted Almond Leather <sup>2</sup>					■
Quilted Black Leather <sup>2</sup>					■
Quilted Espresso Brown Leather <sup>2</sup>					■

	S	SV	SL	ME	PLT
Charcoal Cloth	■				
Almond Leatherette		■			
Charcoal Leatherette		■			
Almond Leather <sup>2</sup>			■		
Charcoal Leather <sup>2</sup>			■		
Black Leather <sup>2</sup>				■	
Quilted Almond Leather <sup>2</sup>					■
Quilted Black Leather <sup>2</sup>					■
Quilted Espresso Brown Leather <sup>2</sup>					■

	S	SV	SL	ME	PLT
Charcoal Cloth					
Almond Leatherette					
Charcoal Leatherette					
Almond Leather <sup>2</sup>					
Charcoal Leather <sup>2</sup>					
Black Leather <sup>2</sup>					
Quilted Almond Leather <sup>2</sup>					■
Quilted Black Leather <sup>2</sup>					■
Quilted Espresso Brown Leather <sup>2</sup>					■



Hermosa Blue Pearl



Mocha Almond Pearl



Super Black

	S	SV	SL	ME	PLT
Charcoal Cloth					
Almond Leatherette					
Charcoal Leatherette					
Almond Leather <sup>2</sup>			■		
Charcoal Leather <sup>2</sup>			■		
Black Leather <sup>2</sup>				■	
Quilted Almond Leather <sup>2</sup>					■
Quilted Black Leather <sup>2</sup>					■
Quilted Espresso Brown Leather <sup>2</sup>					■

	S	SV	SL	ME	PLT
Charcoal Cloth					
Almond Leatherette					
Charcoal Leatherette					
Almond Leather <sup>2</sup>					
Charcoal Leather <sup>2</sup>					
Black Leather <sup>2</sup>					
Quilted Almond Leather <sup>2</sup>					■
Quilted Black Leather <sup>2</sup>					■
Quilted Espresso Brown Leather <sup>2</sup>					■

	S	SV	SL	ME	PLT
Charcoal Cloth					
Almond Leatherette					
Charcoal Leatherette					
Almond Leather <sup>2</sup>					
Charcoal Leather <sup>2</sup>					
Black Leather <sup>2</sup>					
Quilted Almond Leather <sup>2</sup>					■
Quilted Black Leather <sup>2</sup>					■
Quilted Espresso Brown Leather <sup>2</sup>					■

	S	SV	SL	ME	PLT
Charcoal Cloth	■				
Almond Leatherette		■			
Charcoal Leatherette		■			
Almond Leather <sup>2</sup>			■		
Charcoal Leather <sup>2</sup>			■		
Black Leather <sup>2</sup>				■	
Quilted Almond Leather <sup>2</sup>					■
Quilted Black Leather <sup>2</sup>					■
Quilted Espresso Brown Leather <sup>2</sup>					■

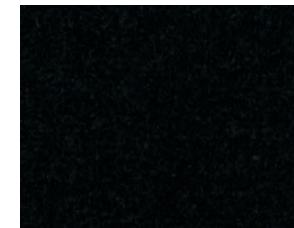
■ Standard

Nissan has taken care to ensure that the color swatches presented here are the closest possible representations of actual vehicle colors. Swatches may vary slightly due to the printing process and whether viewed in daylight, fluorescent or incandescent light. Please see the actual colors at your local Nissan dealer.

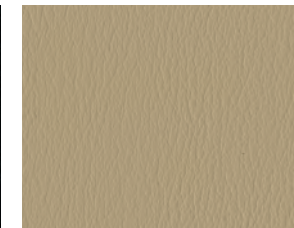
## CHOOSE YOUR INTERIOR



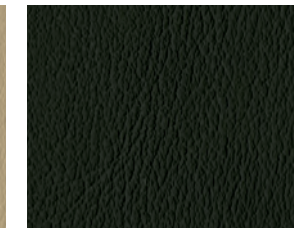
Nissan Armada® Platinum shown in Quilted Almond Leather<sup>2</sup>



Charcoal Cloth  
S



Almond Leatherette  
SV



Charcoal Leatherette  
SV



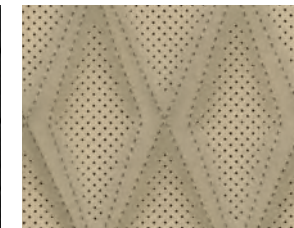
Almond Leather<sup>2</sup>  
SL



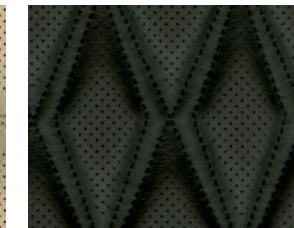
Charcoal Leather<sup>2</sup>  
SL



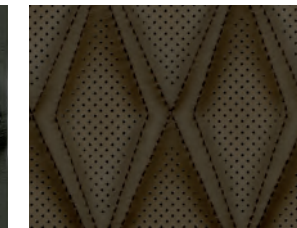
Black Leather<sup>2</sup>  
Midnight Edition



Quilted Almond Leather<sup>2</sup>  
Platinum



Quilted Black Leather<sup>2</sup>  
Platinum



Quilted Espresso Brown Leather<sup>2</sup>  
Platinum

## CHOOSE YOUR TRIM LEVEL

### S

- 400-hp Endurance® 5.6-liter V8 engine<sup>9</sup>
- 7-speed automatic transmission
- Available Intelligent 4x4 with 2-speed transfer case<sup>11</sup>
- 13.8" front and rear vented disc brakes
- Anti-lock Braking System (ABS)
- Electronic Brake force Distribution (EBD) with Brake Assist<sup>21</sup>
- Independent double-wishbone suspension with auto-leveling rear suspension and stabilizer bars
- Intelligent Cruise Control<sup>18</sup>
- Intelligent Driver Alertness<sup>22</sup>
- Intelligent Lane Intervention<sup>17</sup>
- Intelligent Forward Collision Warning<sup>23</sup>
- Automatic Emergency Braking with Pedestrian Detection<sup>13</sup>
- Intelligent Blind Spot Intervention<sup>16</sup>
- Rear Cross Traffic Alert<sup>15</sup>
- Front and Rear Sonar<sup>24</sup>
- Rear Automatic Braking<sup>14</sup>
- High Beam Assist
- Hill start assist
- Vehicle Dynamic Control (VDC)<sup>25</sup> with Traction Control System (TCS)
- Active Brake Limited Slip (ABLS)
- 18" 12-spoke aluminum-alloy wheels
- LED low/high-beam headlights with integrated signature
- Power heated and folding black outside mirrors with LED turn signal indicators
- Class IV tow hitch receiver with 7-pin wiring harness<sup>10</sup>
- Dual Zone Automatic Temperature Control
- Rear air conditioning with rear controls
- In-cabin microfilter
- Nissan Intelligent Key® with Push Button Ignition
- Rear Door Alert<sup>26</sup>
- Variable intermittent windshield wipers
- Intermittent rear window wiper
- Three 12-volt DC power outlets<sup>5</sup>
- Four cup holders and eight bottle holders
- Cargo-area storage under rear floor<sup>27</sup>
- Eight cargo tie-down hooks<sup>27</sup>
- 10-way power driver's seat
- 8-way power passenger's seat
- Second-row 60/40-split fold-down bench seat
- Third-row 60/40-split fold-down bench seat
- Cloth seats
- Leather-wrapped steering wheel and shift knob
- 7" Advanced Drive-Assist® Display<sup>28</sup>
- NissanConnect® 12.3" color touch-screen display<sup>4</sup>
- Nissan Door to Door Navigation<sup>29</sup>
- Wireless Apple CarPlay® integration<sup>4</sup>
- Android Auto™<sup>4</sup>
- NissanConnect® Services powered by SiriusXM® with trial access to 5-year Select and Plus, and 6-month Premium packages<sup>4</sup>
- NissanConnect® with Wi-Fi Hotspot<sup>4</sup>
- SiriusXM® Traffic and Travel Link with 3-month complimentary trial access<sup>4</sup>
- Hands-free Text Messaging Assistant<sup>6</sup>
- AM/FM Audio System with four speakers
- SiriusXM® Radio with 3-month complimentary trial access<sup>4</sup>
- Two USB-A and two USB-C ports<sup>5</sup>



### SV INCLUDES S EQUIPMENT PLUS:

- Trailer brake controller
- Power heated and folding body-color outside mirrors with LED turn signal indicators
- Rear privacy glass
- Dark gray roof rails
- Body-color overfenders
- Heated front seats
- Leatherette seats
- Wireless charger<sup>5</sup>
- AM/FM Audio System with six speakers



### SL INCLUDES SV EQUIPMENT PLUS:

- Intelligent Around View® Monitor<sup>30</sup>
- Trailer Sway Control<sup>10</sup>
- 20" 18-spoke aluminum-alloy wheels
- LED fog lights
- Body-color outside mirrors with puddle lights
- Auto-dimming outside mirrors
- Power sliding glass moonroof
- Power liftgate
- Remote Engine Start System<sup>19</sup>
- HomeLink® Universal Transceiver
- Auto-dimming rearview mirror
- 120-volt AC power outlet<sup>31</sup>
- Footwell lights
- Memory System - driver's seat, steering wheel, and outside mirrors
- Leather-appointed seats
- Leather-appointed door trim with double stitching
- Wood-tone trim
- Bose Premium Audio System with 13 speakers, including center speaker and subwoofer
- Bose AudioPilot™ Noise Compensation Technology



### MIDNIGHT EDITION® INCLUDES SL EQUIPMENT PLUS:

- 20" 12-spoke aluminum-alloy wheels
- Black lower center bumper fascias
- Black grille
- Black rear finisher
- Power heated and folding black outside mirrors with LED turn signal indicators
- Black exterior badging
- Black roof rails
- Black interior trim and headliner
- Midnight Edition Floor Mats
- Carpeted Cargo Area Protector<sup>27</sup>



### PLATINUM INCLUDES SL EQUIPMENT PLUS:

- Vehicle-speed-sensitive power steering
- Intelligent Back-Up Intervention<sup>32</sup>
- Intelligent Rear View Mirror<sup>33</sup>
- Traffic Sign Recognition<sup>34</sup>
- 22" 14-spoke aluminum-alloy wheels
- Chrome outside mirrors
- Windshield wiper deicer
- Rain-sensing windshield wipers
- Illuminated cup holders
- Climate-controlled front seats (heated and cooled)
- Heated outboard second-row seats
- Power recline and one-touch folding third-row<sup>7</sup>
- Quilted leather-appointed seats
- Birdseye Maple wood-tone trim
- Heated leather-wrapped steering wheel with contrast stitching
- Tri-Zone Entertainment System with dual 8" monitors, remote control, two wireless headphones, USB and HDMI input<sup>5,8</sup>



## CHOOSE YOUR PACKAGE

### APPEARANCE PACKAGE | SV

- 20" 18-spoke aluminum-alloy wheels
- Fog lights
- Auto-dimming rearview mirror
- HomeLink® Universal Transceiver
- Power liftgate

### CAPTAIN'S CHAIRS PACKAGE | SL, PLATINUM

- Second-row fold-down captain's chairs with tip-up easy entry for third row
- Second-row padded center console with cup holders

## CHOOSE YOUR ACCESSORIES



**A. Illuminated Kick Plates**

For a grand entrance every time.

**B. Cargo Net<sup>27</sup>**

Keep items secure, in place, and within easy reach.

**C. Rear Liftgate Illuminated Scuff Guard**

A bright idea that protects your liftgate.

**D. Interior Accent Lighting**

Starts every trip with a warm glow.

**E. All-Season Floor Mats**

Neither rain, sleet, nor snow will mess your ride.

**F. Rear Bumper Step**

A little help when loading up.

**G. All-Season Cargo Area Protector<sup>27</sup>**

Preserve and protect your cargo – and your Armada.

**H. Weight-Distributing Hitch Ball Mount, Class IV<sup>10</sup>**

We'll hook you up.

Additional Accessories:

- Frameless Auto-dimming Rearview Mirror with Universal Remote
- Carpeted Cargo Area Protector<sup>27</sup>
- Cargo Organizer<sup>27</sup>
- Impact Sensor
- Hatch Tent
- And More

For more information and to shop online for Armada® Genuine Nissan Accessories, go to [bit.ly/22Armada-Accy](https://bit.ly/22Armada-Accy)

## NISSAN ARMADA® ACCESSORIES

### Turn brand-new into all you

Every Genuine Nissan Accessory is custom-fit, custom-designed and durability-tested. Each one is backed by Nissan's 3-year/36,000-mile (whichever occurs first) limited warranty (if installed by dealer at the time of purchase), and can be financed when installed by dealer at time of purchase.<sup>35</sup> Affiliated Yakima® accessories are not warranted by Nissan. Refer to product manufacturer for warranty details. Nissan Limited Warranty does not cover damages or failures to the vehicle caused by improper installation or alterations of any Nissan approved accessory or component. Contact your dealer/retailer for details.



**Nissan Armada® Platinum** shown in Aspen White TriCoat with Chrome Side Moldings, Chrome Side Mirror Covers (standard on Platinum), Exterior Ground Lighting, Roof Rail Crossbars,<sup>27, 36</sup> Side-Window Deflectors, Moonroof Wind Deflector, Rear Bumper Step, Hitch Ball Mount, Class III,<sup>10</sup> Hitch Ball, Class III,<sup>10</sup> and Affiliated Yakima® SkyBox.<sup>37</sup>

## SPECIFICATIONS

Engine	S	SV	SL	Midnight Edition	Platinum
Endurance® 5.6-liter DOHC 32-valve V8 engine — 400 hp @ 5,800 rpm <sup>9</sup> — 413 lb-ft of torque @ 4,000 rpm <sup>9</sup>	■	■	■	■	■
Variable Valve Event and Lift (VVEL®) technology	■	■	■	■	■
Direct Injection Gasoline (DIG)	■	■	■	■	■

Drivetrain	S	SV	SL	Midnight Edition	Platinum
Intelligent 4x4 with 2-speed transfer case <sup>11</sup>	□	□	□	□	□
7-speed automatic transmission with manual shift mode and Downshift Rev Matching	■	■	■	■	■
Final drive ratio (2.937:1)	■	■	■	■	■

Brakes	S	SV	SL	Midnight Edition	Platinum
13.8" front and rear vented disc brakes	■	■	■	■	■
Anti-lock Braking System (ABS)	■	■	■	■	■
Electronic Brake force Distribution (EBD)	■	■	■	■	■
Brake Assist <sup>21</sup>	■	■	■	■	■

Suspension/Steering	S	SV	SL	Midnight Edition	Platinum
Independent double-wishbone front/rear suspension	■	■	■	■	■
Auto-leveling rear suspension	■	■	■	■	■
Front and rear stabilizer bars	■	■	■	■	■
Engine-speed-sensitive power steering	■	■	■	■	■
Vehicle-speed-sensitive power steering	■	■	■	■	■

Driver Assistance Technologies	S	SV	SL	Midnight Edition	Platinum
Intelligent Cruise Control <sup>18</sup>	■	■	■	■	■
Intelligent Driver Alertness <sup>22</sup>	■	■	■	■	■
Lane Departure Warning <sup>17</sup>	■	■	■	■	■
Intelligent Lane Intervention <sup>17</sup>	■	■	■	■	■
Intelligent Forward Collision Warning <sup>23</sup>	■	■	■	■	■
Automatic Emergency Braking with Pedestrian Detection <sup>13</sup>	■	■	■	■	■
Blind Spot Warning <sup>16</sup>	■	■	■	■	■
Intelligent Blind Spot Intervention <sup>16</sup>	■	■	■	■	■
Intelligent Rear View Mirror <sup>33</sup>	■	■	■	■	■
Rear Cross Traffic Alert <sup>15</sup>	■	■	■	■	■
Intelligent Back-Up Intervention <sup>32</sup>	■	■	■	■	■
RearView Monitor <sup>38</sup>	■	■	■	■	■
Intelligent Around View® Monitor <sup>30</sup>	■	■	■	■	■
Front and Rear Sonar System <sup>24</sup>	■	■	■	■	■
Rear Automatic Braking <sup>14</sup>	■	■	■	■	■
High Beam Assist	■	■	■	■	■
Traffic Sign Recognition <sup>34</sup>	■	■	■	■	■
Hill start assist	■	■	■	■	■
Vehicle Dynamic Control (VDC) <sup>25</sup> with Traction Control System (TCS)	■	■	■	■	■
Active Brake Limited Slip (ABLS)	■	■	■	■	■
Trailer sway control <sup>10</sup>	■	■	■	■	■
Trailer brake controller <sup>10</sup>	■	■	■	■	■

Wheels/Tires	S	SV	SL	Midnight Edition	Platinum
18" x 8.0" 12-spoke aluminum-alloy wheels	■	■	■	■	■
20" x 8.0" 18-spoke aluminum-alloy wheels	■	A	■	■	■
20" x 8.0" 12-spoke aluminum-alloy wheels	■	■	■	■	■
22" x 8.0" 14-spoke aluminum-alloy wheels	■	■	■	■	■
P265/70R18 all-season tires	■	■	■	■	■
P275/60R20 all-season tires	■	A	■	■	■
P275/50R22 all-season tires	■	■	■	■	■

Exterior Features	S	SV	SL	Midnight Edition	Platinum
Black lower center bumper fascias	■	■	■	■	■
LED low/high-beam headlights with integrated signature	■	■	■	■	■
LED fog lights	■	A	■	■	■
Dark gray roof rails	■	■	■	■	■
Black roof rails	■	■	■	■	■
Gun Metallic-painted overfenders	■	■	■	■	■
Body-color overfenders	■	■	■	■	■
Power heated and folding outside mirrors with LED turn signal indicators	■	■	■	■	■
Chrome outside mirrors	■	■	■	■	■
Outside mirrors with puddle lights	■	■	■	■	■
Auto-dimming outside mirrors	■	■	■	■	■
Rear privacy glass	■	■	■	■	■
Power sliding glass moonroof with one-touch open/close and tilt feature	■	■	■	■	■
Power liftgate	■	A	■	■	■
Class IV tow hitch receiver with 7-pin wiring harness <sup>10</sup>	■	■	■	■	■

Comfort/Convenience	S	SV	SL	Midnight Edition	Platinum
Dual Zone Automatic Temperature Control	■	■	■	■	■
Rear air conditioning with rear controls	■	■	■	■	■
In-cabin microfilter	■	■	■	■	■
Nissan Intelligent Key® with Push Button Ignition	■	■	■	■	■
Remote Engine Start System <sup>19</sup>	■	■	■	■	■
HomeLink® Universal Transceiver	■	A	■	■	■
Rear Door Alert <sup>26</sup>	■	■	■	■	■
Variable intermittent windshield wipers	■	■	■	■	■
Rain-sensing windshield wipers	■	■	■	■	■
Intermittent rear window wiper	■	■	■	■	■
Windshield wiper deicer	■	■	■	■	■
Auto-dimming rearview mirror	■	A	■	■	■
Sun visors with illuminated vanity mirrors and extension	■	■	■	■	■
Three 12-volt DC power outlets <sup>5</sup>	■	■	■	■	■
120-volt AC power outlet <sup>31</sup>	■	■	■	■	■
Footwell lights	■	■	■	■	■
Four cup holders and eight bottle holders	■	■	■	■	■
Illuminated cup holders	■	■	■	■	■
Cargo-area storage under rear floor <sup>27</sup>	■	■	■	■	■
Eight cargo tie-down hooks <sup>27</sup>	■	■	■	■	■
Midnight Edition® Floor Mats	■	■	■	■	■
Carpeted Cargo Area Protector <sup>27</sup>	■	■	■	■	■

Seating/Appointments	S	SV	SL	Midnight Edition	Platinum
10-way power driver's seat	■	■	■	■	■
8-way power front-passenger's seat	■	■	■	■	■
Memory System – driver's seat, steering wheel, and outside mirrors	■	■	■	■	■
Heated front seats	■	■	■	■	■
Climate-controlled front seats (heated and cooled)	■	■	■	■	■
Heated second-row seats	■	■	■	■	■
Second-row 60/40-split fold-down bench seat	■	■	■	■	■
Second-row fold-down captain's chairs	■	■	C	■	C
Second-row padded center console with cup holders	■	■	C	■	C
Third-row 60/40-split fold-down bench seat	■	■	■	■	■
Power recline and one-touch folding third row <sup>7</sup>	■	■	■	■	■
Cloth seats	■	■	■	■	■
Leatherette seats	■	■	■	■	■
Leather-appointed seats	■	■	■	■	■
Quilted leather-appointed seats	■	■	■	■	■
Leather-wrapped steering wheel	■	■	■	■	■
Heated leather-wrapped steering wheel	■	■	■	■	■
Leather-wrapped shift knob	■	■	■	■	■
Leather-appointed door trim	■	■	■	■	■
Silky-carbon interior trim	■	■	■	■	■
Wood-tone trim	■	■	■	■	■
Birdseye Maple wood-tone trim	■	■	■	■	■

Infotainment	S	SV	SL	Midnight Edition	Platinum
7" Advanced Drive-Assist® Display <sup>28</sup>	■	■	■	■	■
NissanConnect® 12.3" color touch-screen display <sup>4</sup>	■	■	■	■	■
Nissan Door to Door Navigation <sup>29</sup>	■	■	■	■	■
Wireless Apple CarPlay® integration <sup>4</sup>	■	■	■	■	■
Android Auto™ <sup>4</sup>	■	■	■	■	■
NissanConnect® Services powered by SiriusXM® <sup>4</sup>	■	■	■	■	■
NissanConnect® with Wi-Fi Hotspot <sup>4</sup>	■	■	■	■	■
Wireless charger <sup>5</sup>	■	■	■	■	■
Hands-free Text Messaging Assistant <sup>6</sup>	■	■	■	■	■
AM/FM audio system with 4 speakers	■	■	■	■	■
AM/FM audio system with 6 speakers	■	■	■	■	■
Bose Premium Audio System with 13 speakers, including Bose AudioPilot™	■	■	■	■	■
Tri-Zone Entertainment System with dual 8" monitors, remote control, two wireless head-phones, USB and HDMI input <sup>5, 8</sup>	■	■	■	■	■
Two USB-A and two USB-C ports <sup>5</sup>	■	■	■	■	■

Safety/Security	S	SV	SL	Midnight Edition	Platinum
Nissan Advanced Air Bag System with dual-stage supplemental front air bags with seat belt and occupant-classification sensors <sup>39</sup>	■	■	■	■	■
Driver and front-passenger seat-mounted side-impact supplemental air bags <sup>39</sup>	■	■	■	■	■
Roof-mounted curtain side-impact supplemental air bags for outboard occupant head protection for all three rows <sup>39</sup>	■	■	■	■	■
LATCH System (Lower Anchors and Tethers for Children)	■	■	■	■	■
Tire Pressure Monitoring System (TPMS) with Easy-Fill Tire Alert <sup>40, 41</sup>	■	■	■	■	■

## DIMENSIONS/CAPACITIES/MPG

Exterior Dimensions – Inches	
Wheelbase	121.1
Overall length/width/height	208.9/79.9/75.8
Track width (front/rear)	67.5/67.9

Vehicle Clearance	
Minimum Ground Clearance (inches) S, SV	9.1
Minimum Ground Clearance (inches) SL, ME, Platinum	9.2
Angle of approach (degrees) S, SV	20.8
Angle of approach (degrees) SL, ME, Platinum	21
Angle of departure (degrees) S, SV	22.2
Angle of departure (degrees) SL, ME, Platinum	22.4
Breakover angle (degrees) S, SV	20.5
Breakover angle (degrees) SL, ME, Platinum	20.7

Interior Dimensions – Inches	
Head room without moonroof (front)	40.9
Head room with moonroof (front)	39.8
Head room (2nd row/3rd row)	40.0/36.4
Leg room (front row/2nd row/3rd row)	41.9/41.0/28.4
Hip room (front row/2nd row/3rd row)	59.2/58.4/48.8
Shoulder room (front row/2nd row/3rd row)	63.8/63.4/60.5

Capacities	
Seating capacity with 2nd-row bench seat	8
Seating capacity with Captain's Chairs Package	7
Fuel tank (gals.)	26
Maximum towing capacity (lbs.) <sup>10</sup>	8,500
Tongue weight capacity (lbs.)	850

EPA Fuel Economy Estimates <sup>42</sup>	
<b>City/Highway/Combined MPG</b>	
4x2	14/19/16
4x4	13/18/15

## NISSAN ROADSIDE ASSISTANCE

Your peace of mind is on us. For 36 months or 36,000 miles, whichever comes first, your new Nissan is covered for the following:<sup>43</sup>

- Flat-tire changes
- Trip Interruption benefits
- Jump starts
- Vehicle lockouts
- Emergency fuel delivery

Follow Nissan on:



visit [NissanUSA.com/armada](https://www.nissanusa.com/armada)

PRINTED IN POLAND





Sign up to get the latest on  
Nissan vehicles, news, and events.

<https://www.nissanusa.com/brochures/request-brochure.html>